

# PHILIPS



## Air Styler

3000 Series

3 attachments

Ionic care

Keratin Ceramic coating



BHA305/00

## Easy hair styling with ionic care with Keratin ceramic brushes

Dry and style at once - the Philips Air Styler 3000 allows you to create beautiful natural styles, whilst providing extra care and shine. The 3 attachments are suitable for both long and short hair, so you can enjoy easy styling.

### Easy to use

- Cool air setting for gentle drying

### Beautifully styled hair

- 800 W styling power for salon-like results
- Three flexible heat and speed settings for easy control
- 38 mm ThermoBrush for smooth styles and waves
- 30 mm retractable bristle brush for defined waves
- Narrow concentrator for focused airflow

### Care and protect

- Care setting for better protection while drying and styling
- More Care with ion conditioning for shiny, frizz-free hair
- Protective ceramic coating with Keratin infusion

## 3000 Series

Air Styler

BHA305/00

# Highlights

### Care setting



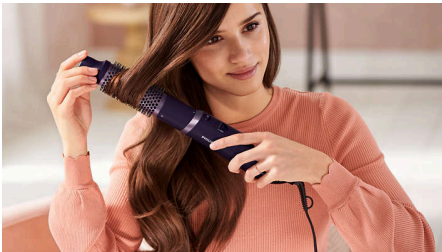
The 'Care' setting ensures the optimum drying temperature and guards against overheating. Hair still dries fast, with the same powerful airflow but at a constant, caring temperature.

### 800 W



The Air Styler with 800 W airflow for gentle drying and styling. Achieve salon-like results every day.

### Keratin ceramic coating



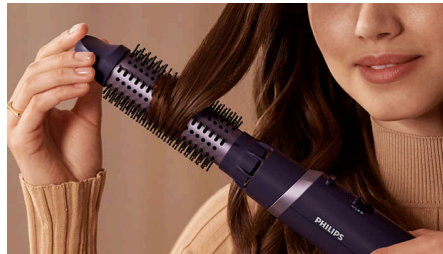
The bristles with keratin-infused ceramic coating glide smoothly through your hair for naturally straight and shiny look.

### 38 mm ThermoBrush



The ThermoBrush has an extra-wide diameter of 38 mm. The width of the barrel makes it the perfect styling tool for creating smooth styles and waves.

### Retractable bristle brush



The 30 mm brush with retractable bristles is designed for easy styling. Turn the tip of the brush and slide it out for defined waves.

### Narrow concentrator



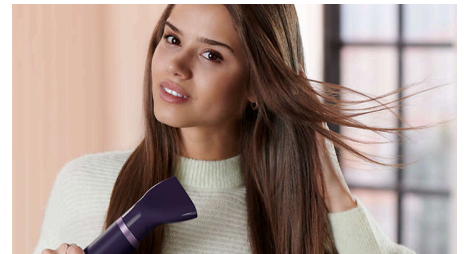
Use the narrow concentrator for focused airflow for precise styling or touch-ups.

### Three flexible settings



Enjoy the combined three heat and two speed settings which will create the perfect end result. You can choose between a low and high speed setting with 3 corresponding heat settings; Cool, Care and High. The flexible settings ensure a powerful airflow with a caring temperature for a precise and tailored styling.

### Cool air setting



The Cool air setting uses low heat to gently dry your hair. It works especially well with fine, dry or damaged hair.

### Ionic Care



Ionic conditioning enables anti-static drying. Charged negative ions eliminate static hair, condition the hair and smooth down the hair cuticles to intensify the hair's shine and glossiness. The result is smooth and frizz-free hair that shines beautifully.



## 3000 Series

Air Styler

BHA305/00

# Specifications

### Attachments

**38-mm Thermo brush:** For smooth styles and waves

**Nozzle:** For a focused airflow

**Retractable 30 mm bristle brush:** For tangle-free waves and curls

### Power

**Voltage:** 220-240 V

**Wattage:** 800 W

### Technical specifications

**Cord length:** 1.8 m

**Number of heat settings:** 3 heat with 2 speed

**Off mode power:** < 0.3 W

### Service

**2 year worldwide warranty**

### Ease of use

Storage hook

Swivel cord

### Caring technologies

Keratin-infused coating

Caring temperature setting

Ion technology

